

FULL COLOUR

ORANGE CRUSH p. 42
SEEING RED p. 46
WINDOW OF OPPORTUNITY p.50
RHAPSODY IN BLUE p.56
MATERIAL WORLD p.58

Lively Hues

*Easy ways
to add colour
to your home*

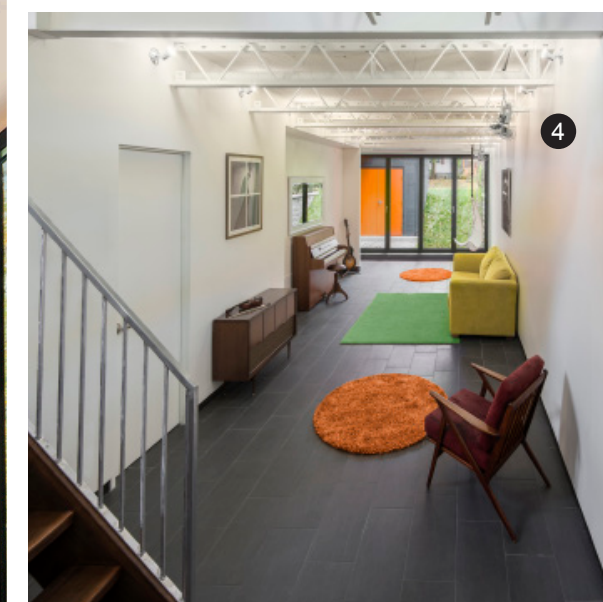
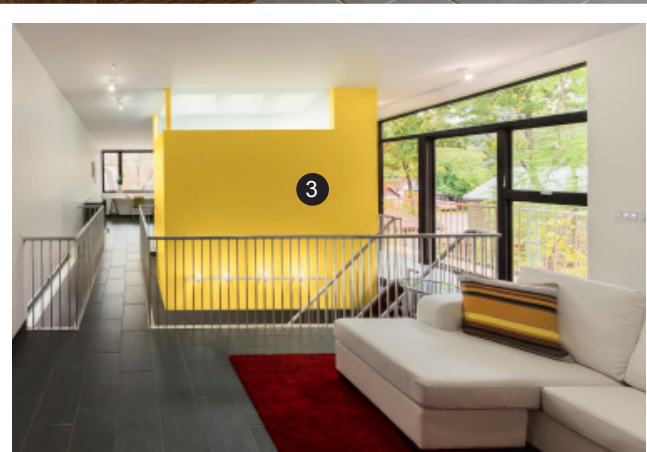
Night Light: A cheery orange exterior and lemon yellow within make a bold statement. p. 42

1 The Dutch heritage of homeowner Jolanda Turley inspired the **cheery orange** on the exterior. The family wanted their home to be bright both on the outside and within.

2 The family is fearless when it comes to colour, but countered the intensity of the **yellow cabinetry** with warm walnut accents

3 This wall, which separates the kitchen and living areas from the master bedroom and study, will likely be repainted in another lively hue once the family moves in.

4 The lower level, which can be entered via a separate door, boasts recreation space and the children's bedrooms.



Orange Crush

A family house makes a cheerful addition to its Hintonburg neighbourhood

BY SARAH BROWN

The homeowners, physician Jolanda Turley and professor Robert Stacey, were dedicated to living close to downtown in a neighbourhood that would allow them to bike virtually everywhere. They were also committed to designing a lively house in which they could raise their two young sons. And so the couple teamed up with designer Paul Kariouk to envisage a vibrant home on a modest lot in Hintonburg. "This couple is fearless," enthuses Kariouk as he discusses their modernist orange-clad dwelling. "It will only get more colourful as the family inhabits the space and makes it their own." (The completion of the house in the spring of 2013 coincided with a one-year sabbatical in Europe for the family, so a lucky renter has enjoyed it this past year.)

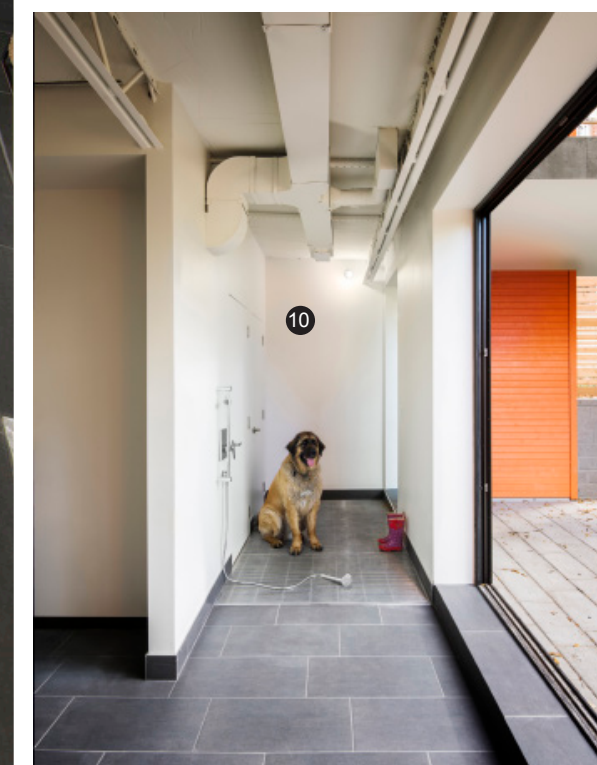
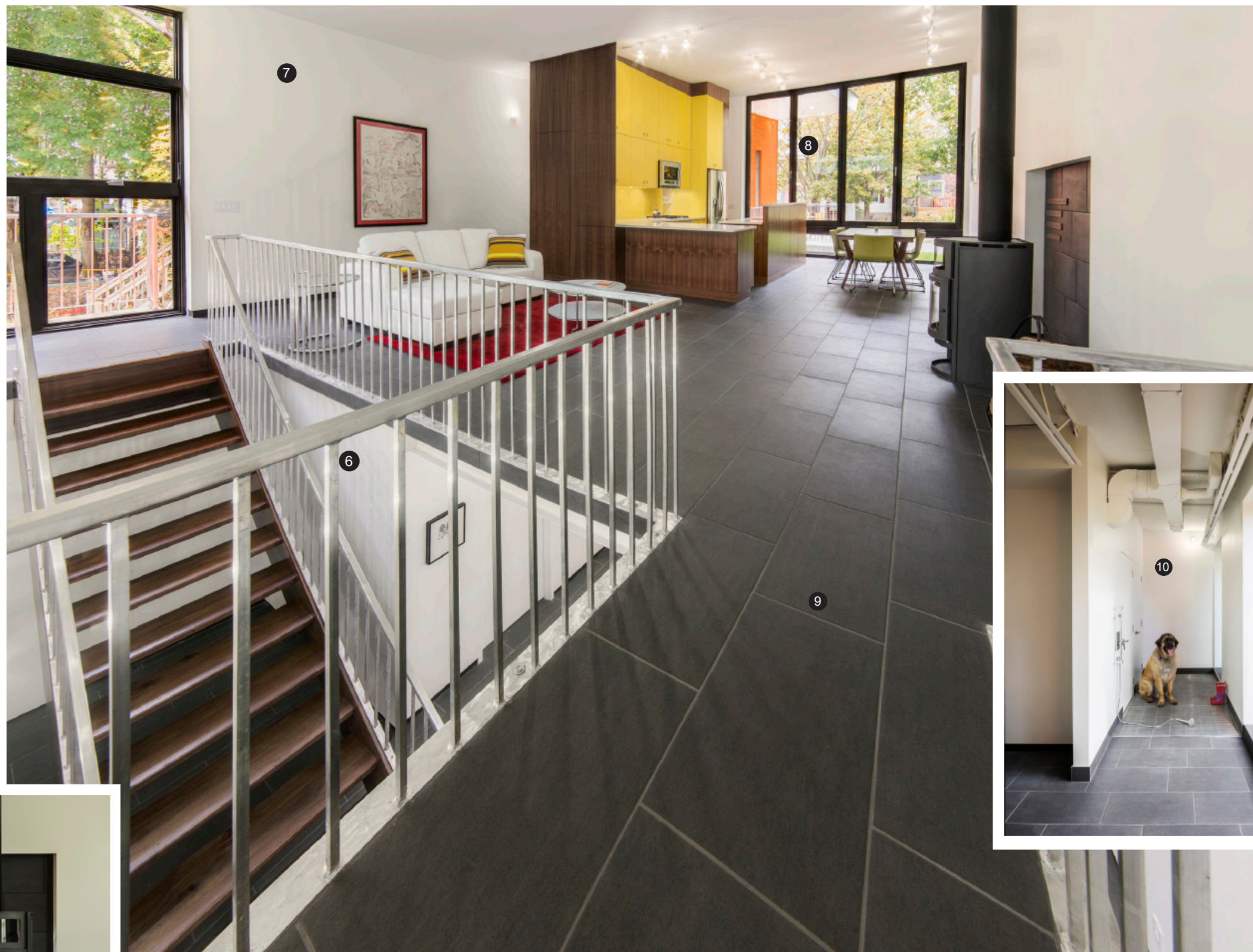
Because the lot is just 30 feet wide, Kariouk knew he would have to design a long, slim house. Neighbouring houses on both sides are very close, so the placement of windows was restricted. "The challenge was to make a long, potentially dark space into a light, bright one," says Kariouk. At the front of the house, expansive accordion windows on the main and lower levels allow light and breezes to flow through, while the back wall boasts slightly smaller

PHOTOGRAPHY PHOTOLUXSTUDIO.COM-CHRISTIAN LALONDE

window. In the centre, generous skylights let the daylight spill through to illuminate the heart of the home. And then there is the colour - the joyful orange exterior gives way to its hits of vibrant yellow within. “The family wanted the house to be bright, both outside and in,” explains Kariouk. “They’re already planning for more colour.”

The kitchen is situated at the front of the house, its lemon yellow cabinetry visible from the street. To balance the intensity of the cupboards, the warmth of walnut accents and a neutral Corian counter come into play. Deep grey ceramic floors also tone down the look, resulting in a space that makes a statement without being over the top. On warm summer days, the family can open up the accordion doors fully and enjoy the neighbourhood sights and sounds; rolling electric screens keep bugs out.

This is house that was a close collaboration between a family dedicated to creating their own unique home in an urban setting and a designer excited by the demands of fulfilling their dreams. Behind the wood stove in the kitchen-living room area hang four bronze plaques. They were a gift from Kariouk to the family and are engraved with a quote by German philosopher Martin Heidegger, whose words were quoted often by Robert Stacey as a direction for the spirit of the design: “It is proper to every gathering that the gatherers assemble to coordinate their efforts to the sheltering; only when they have gathered together with that end in view do they begin to gather.”



5 A high-efficiency woodstove from Scan, a Danish company, adds style and warmth to the kitchen and living room

6 Since these photos were taken, the railings have been clad in walnut to complement the wood on the stairs, the kitchen cabinetry, and dining table.

7 Though the walls are currently white, the family regards their house a “colour lab” and has plans to add more flamboyant shades in the years ahead.

8 Accordion doors on this and the lower level open fully to allow cooling breezes to sweep through the house in the summer months.

9 The radiant heated floors capture and hold the warmth of the winter sun, gradually releasing the heat throughout the home in the evening.

10 The lower-level entrance is designed with a hand shower and drainage so that kids can wash dirty feet on the way in. It works for pets too.