

**HURTEAU  
MILLER  
COTTAGE**





## HURTEAU MILLER COTTAGE

Surrounded by dense forest, this extensively glazed red cedar-clad home is eye-catching and unique. Designed for a couple with a young son, it has been designed as a space that will transition from a congregation space for a large extended family to a permanent family residence in the next decade.

The immediate use for this property is as a sort of 'camp' for a large family community spanning generations and including a considerable amount of dogs. The home was to serve as a family vacation retreat for about ten years, with a view to eventually making it the main family home. The spatial arrangement of the house was designed with this in mind, allowing for a range of differently aged occupants to comfortably pursue a variety of activities between a series of public and private spaces.

The house plan is stretched so that well zoned spaces are easily achieved. Boisterous, loud group activities can be pursued alongside solitary, quiet pastimes without interfering with one another. With visiting family members of a variety of ages from the very young to the elderly, this was an immediate concern. It further suits the house's future use as a private residence for a family with a teenage boy.

The form of the building is unique and eye-catching, and serves to create a warm and inviting indoor space. The upper floor, which houses all the private guest bedrooms, has been treated as an independent volume pushed into the lower part of the house. Hence the circulation at the perimeter of the lower public volume has high ceilings, whereas the middle area, beneath the lowered bedroom volume is more intimate, with lower ceilings. Three primary materials link the façade with the interior of the home; cedar, glass and terrazzo. The wood is a warm, grounding element of the design offset by the sharp, crisp glass. The terrazzo floors are a radiant but durable option, and the resulting cozy, casual interior requires almost zero maintenance even under the paws and feet of rambunctious animals and children.

The house connects family members in public spaces such as the dining room and living area, but equally, allows each member to exist as an individual left to his or her own interests and activities. Though the design is deliberately segmented to cater to a range of competing interests and needs, the home is clearly connected and forms a single, inviting architectural entity.

Photography by: Photlux Studio/Christian Lalonde



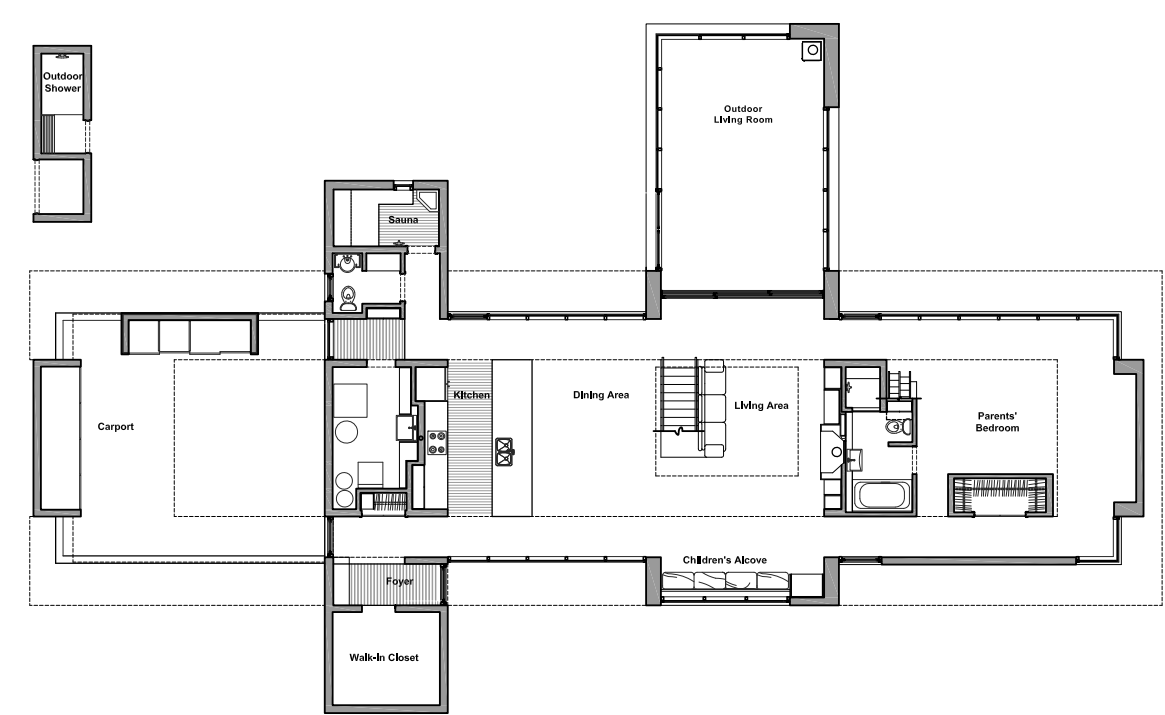
*ARCHITECT* // Paul Kariouk's architecture focuses upon modern residences and landscapes. Paul is a graduate of Columbia University, and established Kariouk Associates in 2002 in Ottawa, Ontario. His design work has been exhibited in such venues as The Cooper Hewitt Smithsonian National Design Museum and the San Francisco Museum of Modern Art. In addition to his practice, Paul is a professor at Carleton University's School of Architecture.

Kariouk Associates  
179 George Street, Suite 1204  
613-562-2211  
[www.kariouk.com](http://www.kariouk.com)

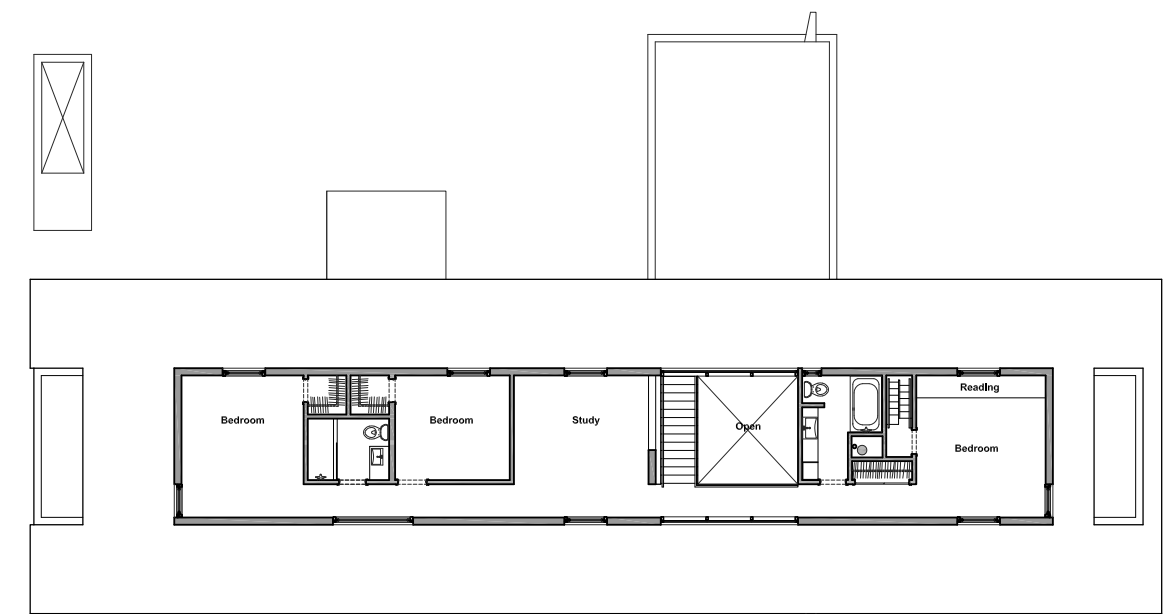




The house connects family members in public spaces such as the dining room and living area, but equally, allows each member to exist as an individual left to his or her own interests and activities.



GROUND FLOOR



UPPER FLOOR