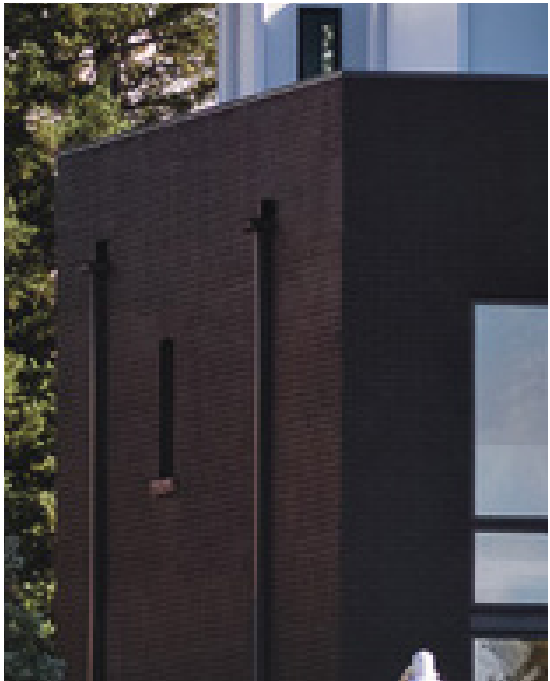


Echo House

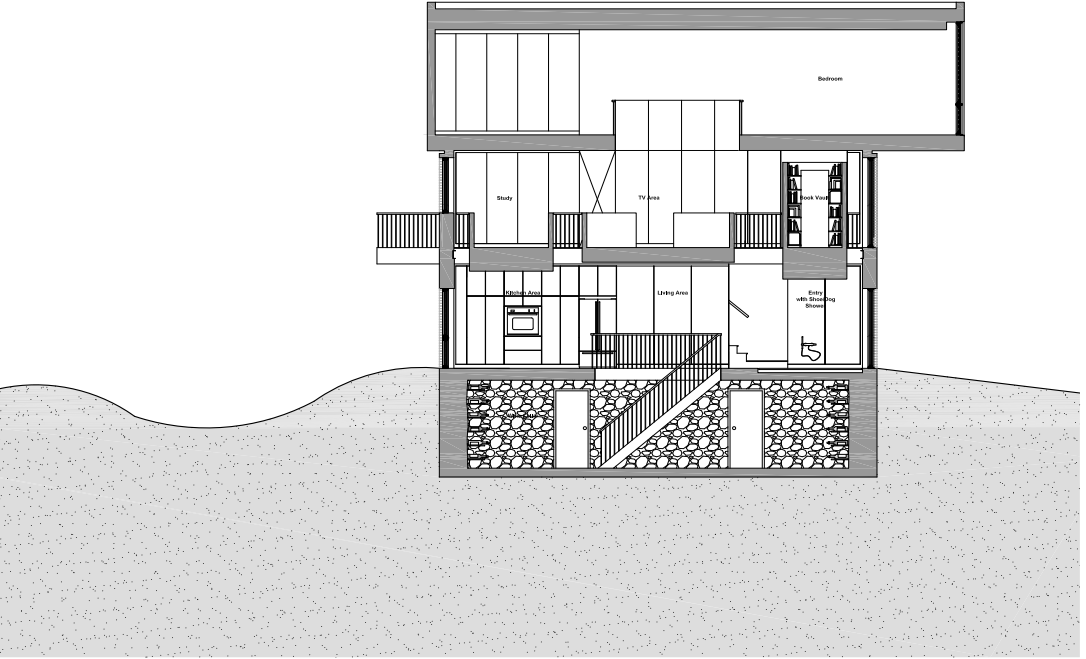
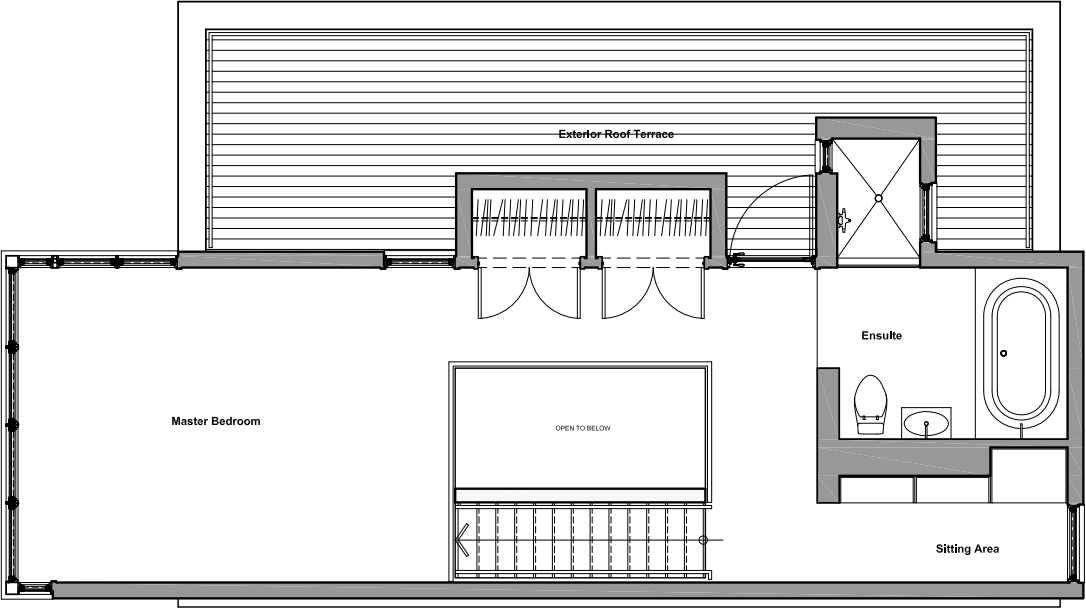
Echo 住宅

Design Company: Kariouk Associates
Designer: Paul duBellet Kariouk
Participant: Chris Davis, Susan Gardiner, Cedric Boulet.
Josee Labelle, Matthew Lahey, Todd Duckworth
Photography Company: Photolux Studios
Location: Ottawa, Canada

设计公司: Kariouk Associates
设计师: Paul duBellet Kariouk
参与设计: Chris Davis, Susan Gardiner, Cedric Boulet.
Josee Labelle, Matthew Lahey, Todd Duckworth
摄影公司: Photolux Studios
地点: 加拿大渥太华







The design task was to marry eighty-four years of history by integrating a contemporary, open, and functional living space inside a 1924 landmark that overlooks the Rideau Canal.

That the house had scarcely been changed since it was originally constructed was both a virtue and a challenge that enabled design opportunities. The footprint of the house is small (approximately 183 square meters). It was therefore not possible to create a loft-like setting on the ground floor that seemed simultaneously open and provided the required distinct work/ living spaces.

The house was re-envisioned as a vertical loft: an open, four-storey volume reaching from the basement to the ceiling of the new roof. The new main level and ormer basement level are opened to each other by a wide stair that highlights view to the home's original stone foundation walls. Hence, the former Victorian main living level, once segregated into four separate rooms, is now made open and spacious. The small, original windows are replaced with large windows both at the front and rear of the new parlour, visually extending that space into the front yard and the back yard, and, finally, enabling views from the back yard (all the way through the house) to views of the Rideau Canal.

设计师的任务是将这个始建于1924年的面朝里多河的地标性建筑改造成一个集现代、开放与功能性于一体的居住空间，且本案也极具深厚的历史文化底蕴。

住宅自建成以后极少整修，保存较为完好，这对此次的设计来说既是亮点也是挑战。房屋占地面积小，约183平方米，因此不可能在底层打造一个阁楼般的基底，使其既拥有开放式布局，又有相互独立的工作生活空间。

本案被重新定义为垂直式阁楼，它是一个开放式的四层空间，从地下室蔓延到新屋顶的天花板。新增的主要楼层和之前的底层由宽楼梯连接，突出了住宅原有的石基墙。因此，曾被分隔成四个房间的维多利亚式主起居层，现已打通，空间开放而宽敞。客厅前后原行的小窗户换成大窗户，空间视觉向前庭后院延伸，于后院亦可观赏里多河的美景。

